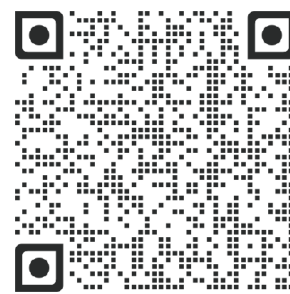


Oregon State Snowmobiling 2025-2026 Season



Open the map in your browser and navigate or buy this map and other recreation maps as a GeoPDF that you can download and print, view in your browser, or use in a GeoPDF reader such as Avenza:
nwpmaps.com/snow#oregon

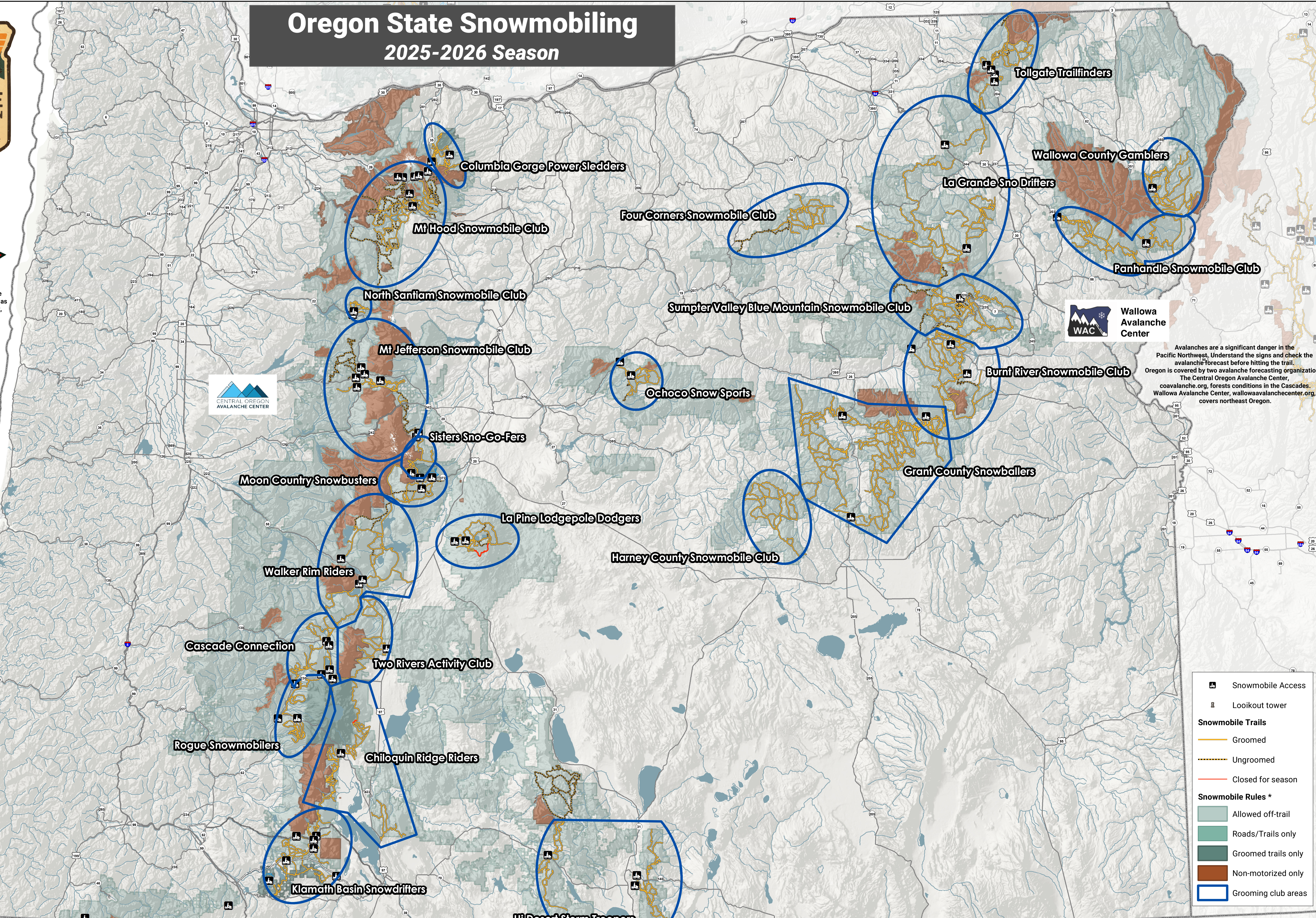


Avalanches are a significant danger in the Pacific Northwest. Understand the signs and check the avalanche forecast before hitting the trail. Oregon is covered by two avalanche forecasting organizations, The Central Oregon Avalanche Center, coavalanche.org, forests conditions in the Cascades, wallowaavalanchecenter.org, covers northeast Oregon.

0 5 10 20 Miles
Date: 1/11/2026

In Oregon, the only motor vehicles allowed on groomed snowmobile trails are class 1 vehicles with tracks that are 50" or less in width. In addition, Nordic skiers, snowshoers, fat tire bikes and dogsleds are generally allowed on groomed snowmobile trails but should respect any restrictions, use caution and move to the side to allow snowmobiles to pass. Grooming is dependent on snow conditions and many trails are not groomed for the entire season.

* Snowmobiles are not allowed in wilderness and other designated non-motorized areas. Snowmobiles are generally allowed to ride off-road/trail in Oregon. ** Snowmobiles must be registered and vehicles are required to display an Oregon, California or Idaho Sno-Park permit when parking at any designated Sno-Park. Information shown on this map is compiled from numerous sources. It has been updated to reflect conditions for the current season. However, it may not be complete or accurate and conditions may have changed.



- Snowmobile Access
- Lookout tower
- Snowmobile Trails**
 - Groomed
 - Ungroomed
 - Closed for season
- Snowmobile Rules ***
 - Allowed off-trail
 - Roads/Trails only
 - Groomed trails only
 - Non-motorized only
 - Grooming club areas

Cascade Connection

Rogue Snowmobilers

Two Rivers Activity Club

Chiloquin Ridge Riders

Klamath Basin Snowdrifters

Hi Desert Storm Troopers

Moon Country Snowbusters

Walker Rim Riders

Sisters Sno-Go-Fers

La Pine Lodgepole Dodgers

Harney County Snowmobile Club

Mt Jefferson Snowmobile Club

Ochoco Snow Sports

North Santiam Snowmobile Club

Sumpter Valley Blue Mountain Snowmobile Club

Mt Hood Snowmobile Club

Four Corners Snowmobile Club

Columbia Gorge Power Sledders

Grant County Snowballers

Burnt River Snowmobile Club

La Grande Sno Drifters

Panhandle Snowmobile Club

Wallawa County Gamblers

Tollgate Trailfinders