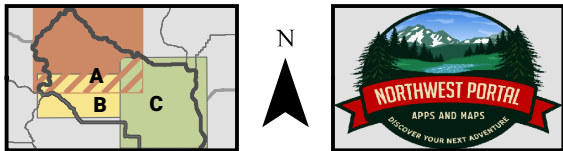


# Discover Kittitas County



2310 W Dolarway Rd Ellensburg, WA 98926  
509-933-1737 - centralpowersports.com

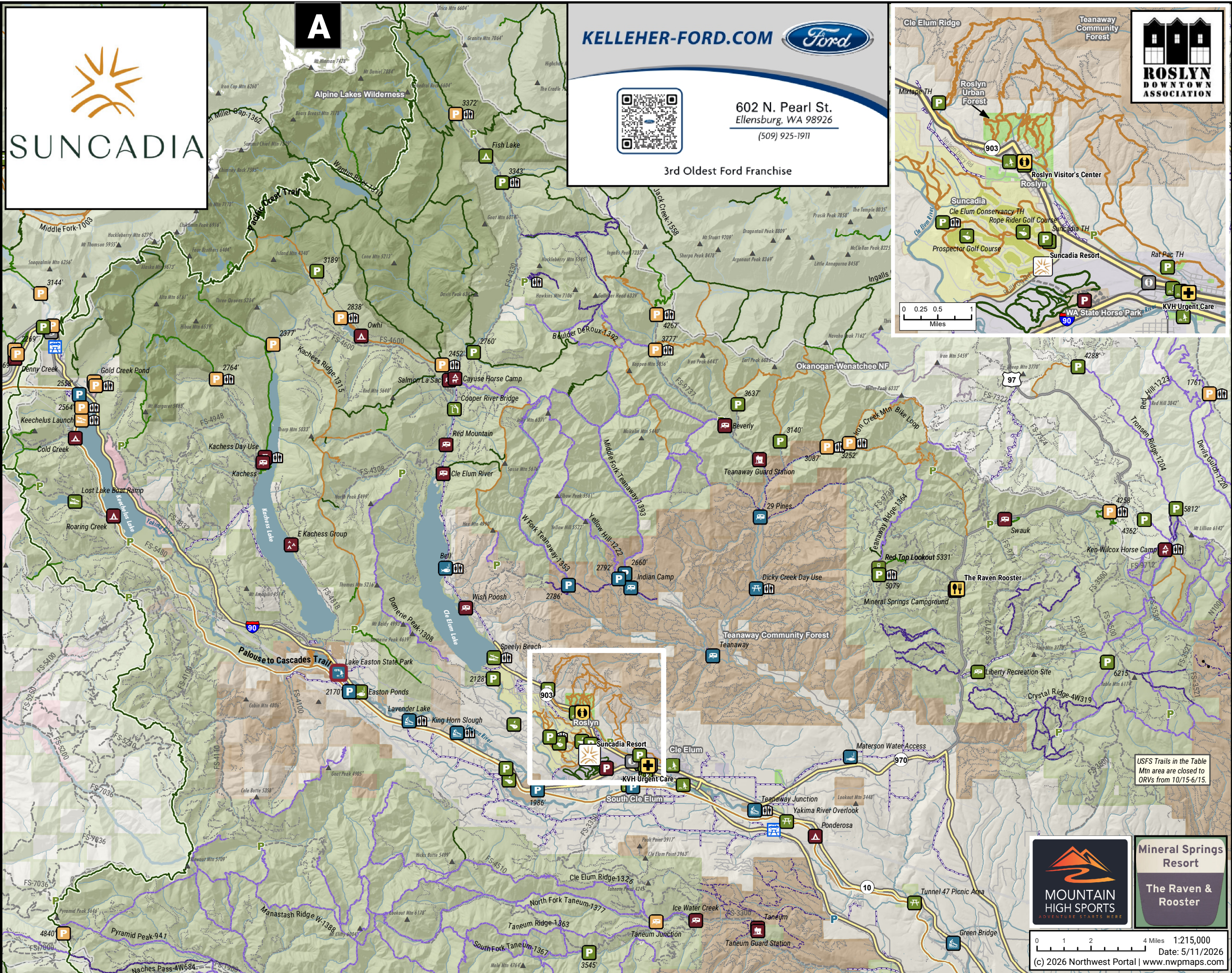
- |  |  |  |
|--|--|--|
|  |  |  |
|  |  |  |
|  |  |  |
|  |  |  |
|  |  |  |
|  |  |  |
|  |  |  |
|  |  |  |
|  |  |  |
|  |  |  |
|  |  |  |
|  |  |  |
|  |  |  |
|  |  |  |
|  |  |  |
|  |  |  |
|  |  |  |
|  |  |  |
|  |  |  |
|  |  |  |

(1) (A) Free indicates no pass or fee required. (B) A Discover or WDFW pass is required at all WA State Parks, WDFW & WDNR areas. The Discover Pass is good on all state lands, the WDFW pass is only for WDFW sites. (C) Federal Passes include the America the Beautiful Pass accepted at all federal sites, and agency specific passes like the USFS NW Forest Pass, the National Parks passes and the \$25 BLM Yakima Canyon pass. (D) Some campgrounds have a fee to camp but take a pass or are free for day use. State & Federal Passes are available on the web and in stores. Discover passes can also be purchased at many parks and USFS visitors can use the recreation.gov mobile app to pay for parking and for camping at non-reservation campgrounds, even if there is no cell signal at the site.  
(2) Shows the most restrictive use allowed on the trail, with less restrictive uses generally but not always allowed. ATV trails are designed for ORVs up to 48" (WDNR) /50" (USFS). Most state and federal agencies restrict E-bikes to motorized trails, however Class 1 and 3 E-bikes are allowed on state park trails and on many city & county trails.  
(3) Non-campground recreation facilities with bathrooms.  
(4) (A) Most roads in Washington are limited to street-legal vehicles including 4x4s and dual registered motorcycles. (B) Roads in purple have been identified as open to Off-Road Vehicles based on USFS Motor Vehicle Usage Maps (MVUM), the WDFW/WDNR Green Dot Road maps or other sources. (C) Closed roads are restricted to non-motorized activities (hike/bike/horse). (D) High-clearance if identified by agency or user input, status not known for all roads. (E) UTVs/SxS that meet specific conditions can get a green WATV plate that allows them to be used on selected city and county roads with a speed limit of 35mph or less. WATVs are not allowed on non-ORV USFS roads.



Find more maps at nwpmaps.com/kittitas  
- Free web map that you can use in your browser,  
- Buy GeoPDF maps of recreation areas in Kittitas County that you can print or use with a GeoPDF reader such as Avenza & CalTopo.

Information shown on this map is compiled from numerous sources. It may not be complete or accurate: conditions, uses, rules and passes can change.



**KELLEHER-FORD.COM**

602 N. Pearl St.  
Ellensburg, WA 98926  
(509) 925-1911

3rd Oldest Ford Franchise

**ROSLYN DOWNTOWN ASSOCIATION**

USFS Trails in the Table Mtn area are closed to ORVs from 10/15-6/15.

0 1 2 4 Miles 1:215,000  
Date: 5/11/2026  
(c) 2026 Northwest Portal | www.nwpmaps.com

